

# Punkin Center Access

## Fifteen-Year Area Management Plan FY 2019-2033



Lisa D. Allen  
Forestry Division Chief

5-23-18  
Date

## Punkin Center Access Area Management Plan Approval Page

### PLANNING TEAM

Samantha Anderson, Resource Forester

Chris Freeman, Wildlife Management Biologist

Thomas Huffmon, Fisheries Management Biologist

Caleb Pryor, Conservation Agent

Steve Buback, Natural History Biologist

Scott Roy, Private Lands Conservationist

Adam Brandsgaard, Education Consultant

### NORTHWEST REGION

RCT Chair

Glenn W. Winters      5-7-18  
Signature                          Date

### FORESTRY DIVISION

Forest Management Chief

Justine Gachner      5-16-18  
Signature                          Date

## OVERVIEW

- **Official Area Name:** Punkin Center Access, #8841
- **Year of Initial Acquisition:** 1988
- **Acreage:** 46 acres (80 acres when purchased)
- **County:** Livingston
- **Region:** Northwest
- **Division with Administrative Responsibility:** Forestry
- **Division with Maintenance Responsibility:** Forestry
- **Statements of Purpose:**
  - A. Strategic Direction**

Management emphasis is on maintaining streambank integrity on the Thompson River and encouraging healthy, sustainable riparian forests and aquatic communities for future generations to use and enjoy.
  - B. Desired Future Condition**

The desired future condition of Punkin Center Access is a mesic oak/hickory forest offering hunting opportunities.
  - C. Federal Aid Statement**

N/A

## GENERAL INFORMATION AND CONDITIONS

- I. Special Considerations**
  - A. Priority Areas:** None
  - B. Natural Areas:** None
  
- II. Important Natural Features and Resources**
  - A. Species of Conservation Concern:** None observed.
  - B. Caves:** None
  - C. Springs:** None
  
- III. Existing Infrastructure**
  - One parking lot
  
- IV. Area Restrictions or Limitations**
  - A. Deed Restrictions or Ownership Considerations:** None
  - B. Federal Interest:** Federal funds may be used in the management of this land. Fish and wildlife agencies may not allow recreational activities and related facilities that would interfere with the purpose for which the State is managing the land. Other uses may be acceptable and must be assessed in each specific situation.
  - C. Easements:** None

- D. Cultural Resource Findings:** No known cultural resources.
- E. Endangered Species:** None observed.
- F. Boundary Issues:** None
- G. Other:** Punkin Center Access lies within the Grand River Alluvial Plains and the Trenton Woodland/Forest Scarped Hills Landtype Associations (Nigh & Schroeder, 2002).

## MANAGEMENT CONSIDERATIONS

### V. Terrestrial Resource Management Considerations

#### **Challenges and Opportunities:**

- 1) Enhance, restore, and protect forest and riparian natural communities.
- 2) Maintain adequate riparian corridors.
- 3) Control invasive species.

**Management Objective 1:** Enhance, restore, and protect forest and riparian communities with management emphasis on wildlife habitat.

**Strategy 1:** Due to the area's small tract size, forest inventory may be completed on an as-needed basis to monitor stand composition and assess needs for forest health. (Forestry)

**Strategy 2:** Conduct periodic monitoring of area for invasive species, using appropriate strategies for management of these species. (Forestry)

**Strategy 3:** Utilize a variety of sustainable forest management techniques to promote healthy forest and woodland communities, including, but not limited to, timber harvesting, forest stand improvement, firewood cutting, salvage cuttings, tree planting, seeding, and prescribed burning. (Forestry)

**Strategy 4:** Utilize best management practices during forest management as described in the Missouri Department of Conservation (Department) manuals: *Missouri Watershed Protection Practice* manual (Missouri Department of Conservation 2014) and the *Missouri Forest Management Guidelines Voluntary Recommendations for Well-Managed Forests* (Missouri Department of Conservation 2014) (Forestry)

**Management Objective 2:** Maintain riparian corridors as specified in the Department's *Watershed and Stream Management Guidelines for Lands and Waters Managed by Missouri Department of Conservation* (2009).

**Strategy 1:** Monitor the riparian corridor for vegetative losses due to erosion. (Forestry)

## VI. Aquatic Resource Management Considerations

### **Challenges and Opportunities:**

- 1) Manage excessive stream bank erosion along the Thompson River.
- 2) Protect and enhance riparian corridors and aquatic habitat.

**Management Objective 1:** Protect and enhance riparian corridors and aquatic habitat.

**Strategy 1:** Continue to maintain the established forested riparian corridors along Thompson River and the area's intermittent streams. (Forestry, Fisheries)

**Strategy 2:** Employ appropriate best management practices when conducting management and enhancement projects. (Forestry, Fisheries)

## VII. Public Use Management Considerations

### **Challenges and Opportunities:**

- 1) Balance providing public recreational opportunities and minimizing user conflicts.

**Management Objective 1:** Co-operatively patrol the area and report unauthorized activities.

**Strategy 1:** Regularly patrol and enforce area regulations and *Wildlife Code of Missouri*, with emphasis on off-trail abuse, vandalism, littering, and response to public complaints. (Protection, Forestry)

## VIII. Administrative Considerations

### **Challenges and Opportunities:**

- 1) Maintain area infrastructure.
- 2) Maintain accurate signage and clearly marked property lines.
- 3) Consider acquisition of land, when available.

**Management Objective 1:** Maintain area infrastructure at current levels.

**Strategy 1:** Maintain area infrastructure in accordance with the Department's guidelines. (Forestry)

**Management Objective 2:** Maintain clearly identified property lines.

**Strategy 1:** Inspect and maintain boundaries on a regular cycle. (Forestry)

**Lands Proposed for Acquisition:**

When available, adjacent land may be considered for acquisition from willing sellers. Tracts that improve area access, provide public use opportunities, contain unique natural communities and/or species of conservation concern, or meet other Department priorities, as identified in the annual Department land acquisition priorities, may be considered.

**MANAGEMENT TIMETABLE**

All strategies for this management plan are considered ongoing.

## APPENDICES

### Area Background:

Punkin Center Access was purchased in 1988 by the Missouri Department of Conservation to provide public access on the Thompson River. The original 80 acres sold for \$32,000 or \$400 per acre. The area includes mesic oak/hickory/honey locust forest and upland woodland areas with scattered old field areas. Movement of the river channel created a steep and unstable bank, resulting in limited access to the Thompson River. Ongoing streambank erosion has removed one of the two original parking lots and has reduced the total access area to 46 acres.

### Current Land and Water Types:

Land/Water Type	Acres	Miles	% of Area
Riparian Forest	25		54
Old Fields	12		26
Upland Forest	9		20
<b>Total</b>	<b>46</b>		<b>100</b>
Stream Frontage		0.45	

### Public Input Summary:

The draft Punkin Center Access Management Plan was available for a public comment period Dec. 1–31, 2017. The Missouri Department of Conservation received comments from two respondents (Appendix A). The Punkin Center Access Planning Team carefully reviewed and considered these ideas as they finalized this document. A brief summary of public input themes, including how they were incorporated or why they were not, can be found below. Rather than respond to each individual comment, comments are grouped into general themes and are addressed collectively.

Department responses to themes and issues identified through the Punkin Center Access Management Plan public comment period.

### **Suggests adding a boat ramp to provide access to the river.**

The Department strives to provide close to home fishing and hunting opportunities for everyone to enjoy. There are several boat ramps in the Chillicothe area that offer motorboat access to the Grand River including Chillicothe Access (3 miles from Chillicothe), Sumner Access (Sumner, MO - 23 miles), Wabash Crossing Access (Gallatin, MO – 31 miles), and Bosworth Access (Bosworth, MO – 36 miles). We hope you continue to enjoy all the outdoor opportunities the Department offers.

Punkin Center has a severe erosion problem and has lost approximately 34 acres of land to the natural path of the Thompson River over the last 30 years. Due to these severe erosion issues, it

would not be wise or cost effective to establish a boat ramp on Punkin Center Access at this time.

**References:**

Missouri Department of Conservation. (2009). *Watershed and stream management guidelines for lands and waters managed by Missouri Department of Conservation*. Jefferson City, MO: Missouri Department of Conservation.

Missouri Department of Conservation. (2014). *Missouri forest management guidelines voluntary recommendations for well-managed forests*. Jefferson City, MO: Conservation Commission of the State of Missouri.

Missouri Department of Conservation. (2014). *Missouri watershed protection practice recommended practices for Missouri forests: 2014 management guidelines for maintaining forested watersheds to protect streams*. Jefferson City, MO: Conservation Commission of the State of Missouri.

Nigh, T. A., & Schroeder, W. A. (2002). *Atlas of Missouri ecoregions*. Missouri Department of Conservation.

**Maps:**

Figure 1: Area Map

Figure 2: Aerial Photo

Figure 3: Cover Types

**Additional Appendices:**

Appendix A: Punkin Center Access Management Plan Public Comments



Figure 1: Area Map

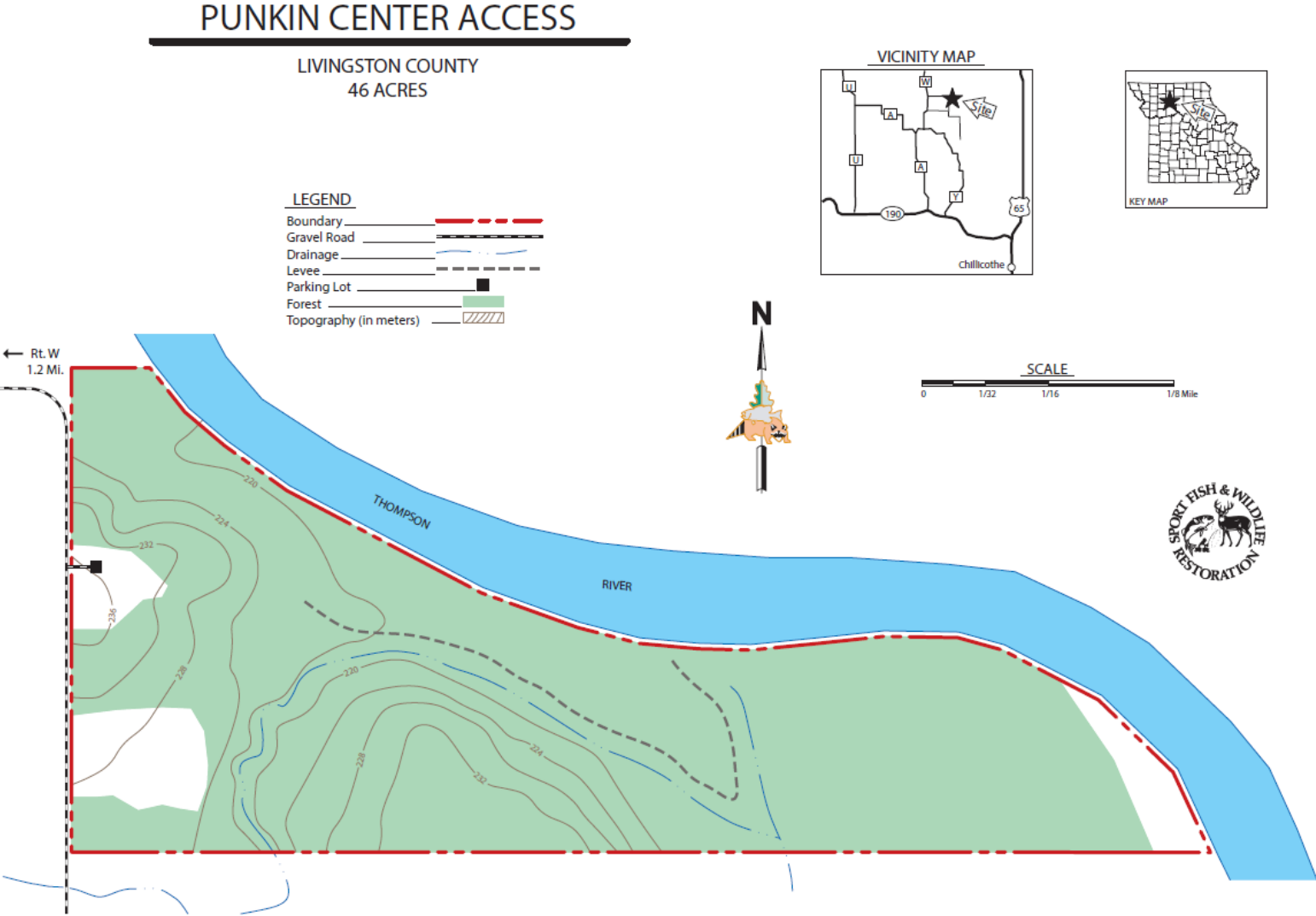


Figure 2: Aerial Photo

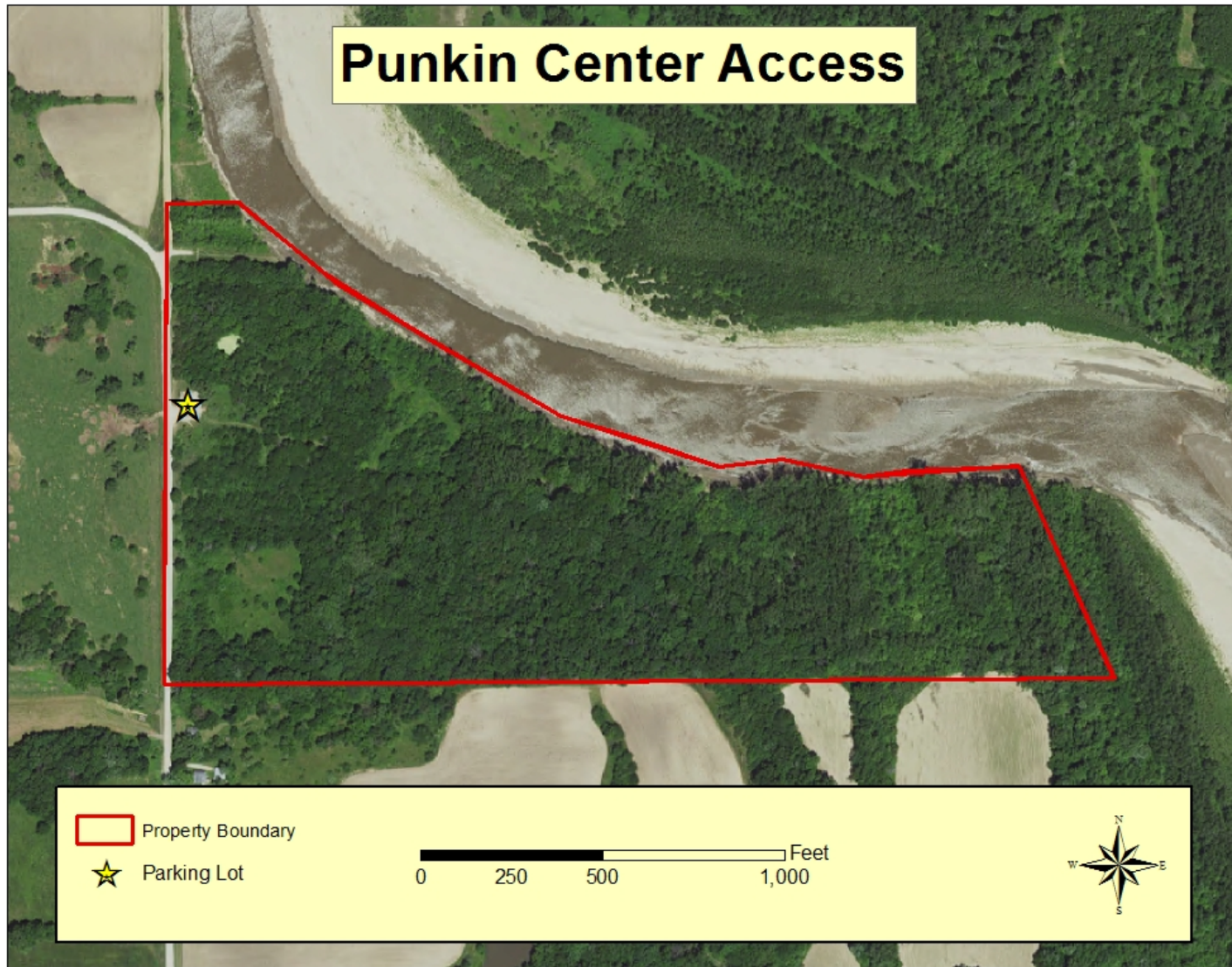
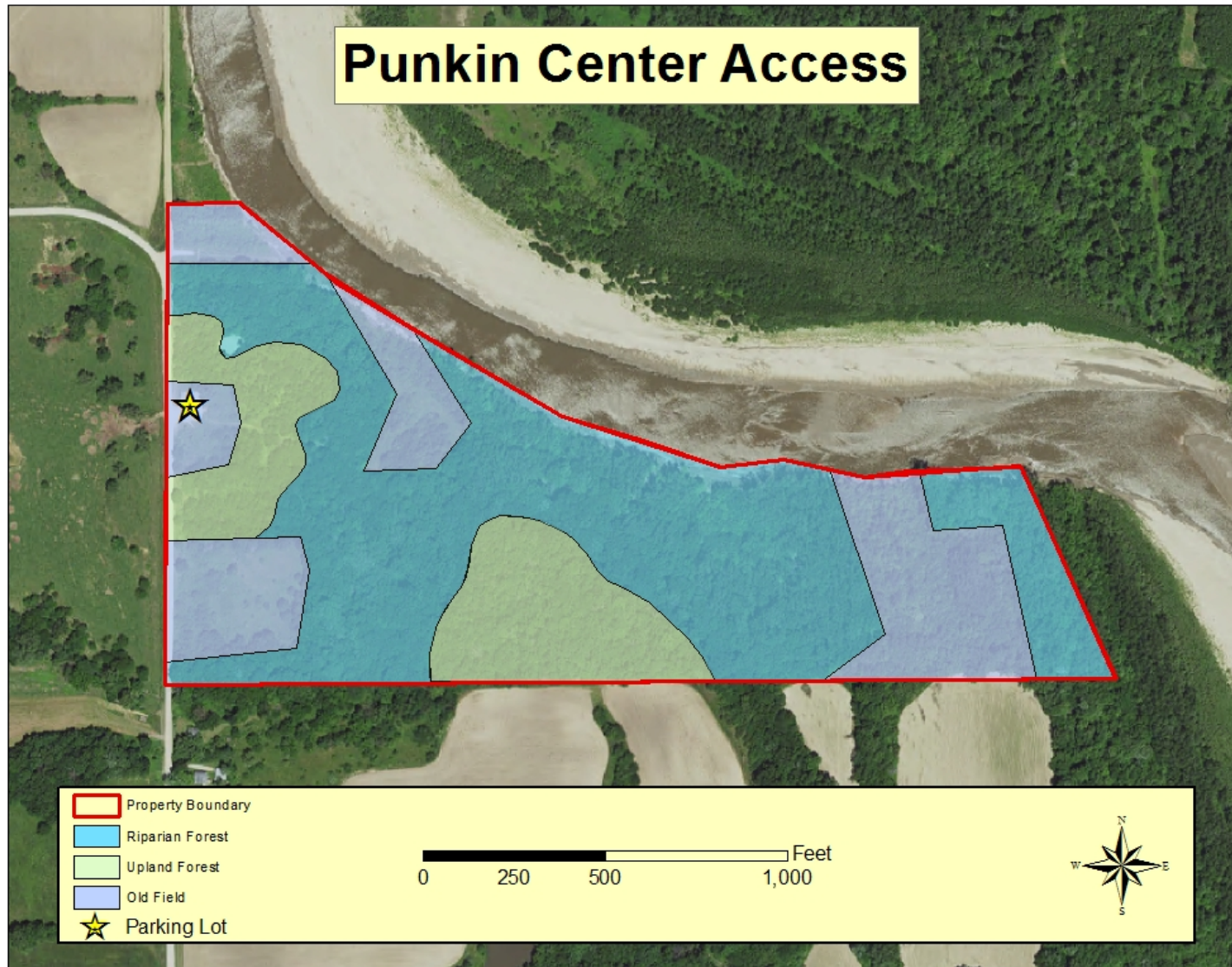


Figure 3: Cover Type



**Appendix A: Punkin Center Access Management Plan Public Comments**

Received during public comment period (Dec. 1–31, 2017):

I'd like to see more boat launching ramps in the Chillicothe area. When the water levels are low in our area it's nearly impossible to navigate the Grand in both directions. I'm no expert nor do I have a solution but would like to have more options close to home. Thank you for doing what you do for our local areas!! My daughter and I are very appreciative of the privileges we have to be able to hunt, fish, and just enjoy the outdoors.

I would like to see the department create some type of boat access on the area. There is not a way to get to the river on this access with any type of watercraft. Banks are straight up and down. Sincerely \*\*\*\*\*